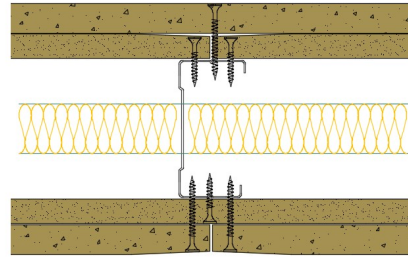


70-S-65(25) - SPEEDLINE System Data Sheet - Version V1 (24-10-23)

SPEEDLINE 70mm 'C' Stud Partition @600mm Ctrs,
with Inner Siniat GTEC 12.5mm Standard Board,
Outer Siniat GTEC 15mm Universal/Megadeco
Board each side, 25mm APR



System Performance Breakdown

Fire Resistance:

BS476 Part 22:1987:

Test Ref & Date or Applied Ref & Report:

Max Height:

Thickness:

Duty Grade: BS 5234: Part 2:1992:

Sound Insulation:

60/60 Minutes (Integrity/Insulation).

- BRE Report P102396-1011C

Refer to Speedline Specification Clause

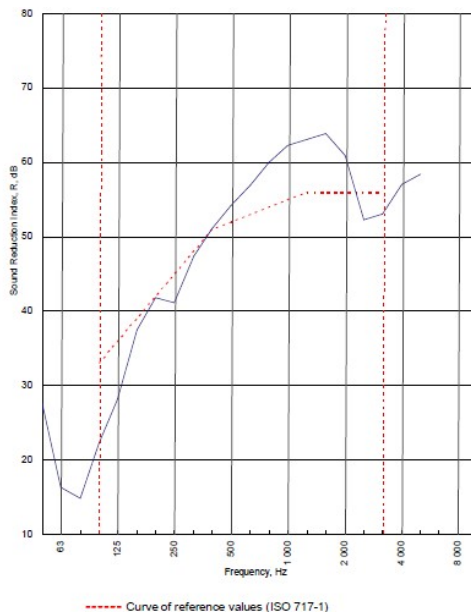
127 mm. (At Base Track, Excluding Finishes)

Severe - Annexes A-F

52 R_w dB, Date Tested or Assessed Against - 12/08/2011

Test Code:
H17531AA
Test Date:
12/08/2011

Freq. Hz	R dB
50	27.6
63	16.3
80	14.9
100	22.3
125	28.2
160	37.5
200	41.8
250	41.1
315	47.4
400	51.1
500	54.2
630	56.9
800	60.0
1 000	62.3
1 250	63.1
1 600	63.9
2 000	60.9
2 500	52.3
3 150	53.1
4 000	57.1
5 000	58.4
6 300	
8 000	
10 000	



Rating according to BS EN ISO 717-1:1997	R_w (C;Ctr) = 52 (-4;-11) dB		
Evaluation based on laboratory measurement results obtained by an engineering method:	$C_{50-3150} = -8$ dB	$C_{50-5000} = -7$ dB	$C_{100-5000} = -3$ dB
	$C_{7,50-3150} = -19$ dB	$C_{7,50-5000} = -19$ dB	$C_{7,100-5000} = -11$ dB

TESTED AT ONE OF THE UKAS ACCREDITED LABORATORIES BELOW

B.T.C (H-Ref on Graph)

B.R.E

AIRO

S.R.L



Customer: Metsec plc Hpsc Division

BTC 17531A: Page 9 of 11

SPEEDLINE Drywall Systems, Adsetts House, 16 Europa View, Sheffield Business Park, Sheffield, S9 1XH.

Tel: 0114 231 8030.

Email: enquiries@speedlinedrywall.co.uk

(As per the requirements set out in ISO/IEC 17025:2017 regarding test data the results stated have been carried out by voestalpine Metsec plc as part of the contract to supply Speedline Metal Sections to SIG Plc)